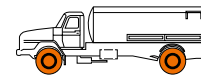


Tire Structure

Field Test in USA

- AH24 shows better mileage (better wear resistance)

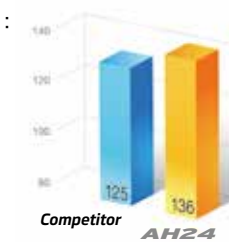
USA TEST FLEET



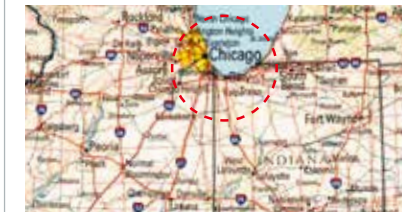
- Size : Size : 11R22.5
- Application : Regional Steer & Drive Position
- Load : 80 ~ 100%

Test Result (Index)

- Test Size : 11R22.5



Test Region



- Chicago, Illinois

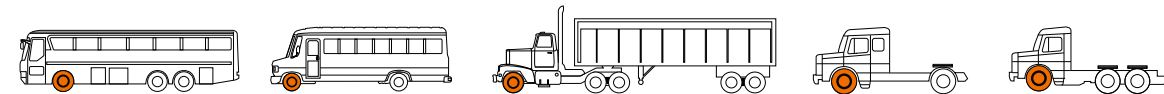
Sizes & Specifications

AL24

S-code	Size	Ply Rating	Type	Measuring Rim	Max Air (psi)		Max Load (lbs)		Overall Diameter (inch)	Section Width (inch)	Tread Width (inch)	Tread Depth (32 ^{nds})	Revs /Mile	SLR (inch)	Max Speed	Weight (lbs)
					S	D	S	D								
3001472	11R22.5	14	T/L	8.25	105	105	6,175	5,840	41.6	11.1	8.8	22	499	19.5	75	127
3001786	11R22.5	16	T/L	8.25	120	120	6,610	6,005	41.6	11.1	8.8	22	499	19.5	75	127
3001787	11R24.5	14	T/L	8.25	105	105	6,610	6,005	43.7	11.1	8.8	22	475	20.5	75	130
3001788	11R24.5	16	T/L	8.25	120	120	7,160	6,610	43.7	11.1	8.8	22	475	20.5	75	130
3001630	295/75R22.5	14	T/L	8.25	110	110	6,175	5,675	40.4	11.3	8.8	22	514	19.0	75	118
3001628	285/75R24.5	14	T/L	8.25	110	110	6,175	5,675	41.6	11.3	8.8	22	499	19.6	75	119

• Technical data subject to change without prior notice.

Recommended Vehicle Types and Position



☉ Recommended position

OFFICIAL TIRE OF
MAJOR LEAGUE
BASEBALL



AH24

Approved for SmartWay & CARB



Hankook Tire & Technology



Hankook Tire America Headquarters

333 Commerce Street, Suite 600 Nashville, Tennessee 37201, USA T +1 615 432 0700 F +1 615 242 8709
www.hankooktire.com/us

4304_0519_01

Longer mileage tire for regional haul



Kontrol Technology is Hankook Tire's technology philosophy which reflects how the tire should perfectly control the interaction between the driver, the car and the road while in motion. It is implemented to ensure Hankook Tire provides the greatest benefits and driving experiences to customers in terms of safety, driving comfort, handling, performance and environmental friendliness. AH24 is an example of a tire that embodies Kontrol Technology.

Optimized Pattern design for regional haul tire

- Multi-purpose tire



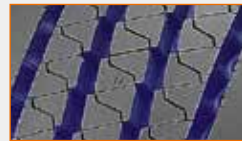
Combination of straight and zigzag grooves provides better performance for traction and driving.



Closed shoulder rib provides a stability and better performance for even wear.



Multi sipes provide better even wear.



Unique tread design helps decrease stone retention.

Deeper groove and wider tread provide longer tread life.

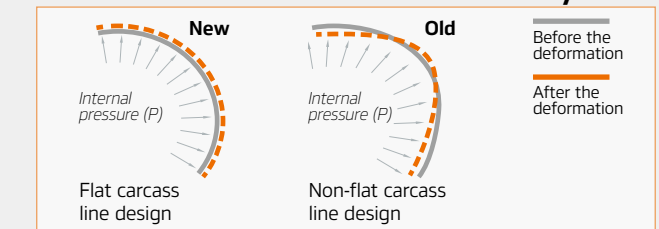


Sidewall Protector Rib resists cuts and abrasions from curbing and impact.



Application of new design technology SCCT

- SCCT : Stiffness Control Contour Theory



Maximized wear resistance

- IMS (Innovative Mixing System) ensuring long mileage and fuel efficiency



Increased durability & foot shape

- AH24 shows better durability & foot shape

