



DL 21 APPROVED FOR SMARTWAY & CARB

Optimized for Long-Haul Drive Position



Tire Structure

Belt structure

Minimized motion of belts for low heat generation.



Carcass structure

Minimized tire deformation for optimized foot shape and lower energy loss.

Improved bead

Optimized bead profile for superior retreadability.

Sizes & Specifications

DL21

S-Code	Size	Ply Rating	Type	Measuring Rim	Max.Air (PSI)		Max.Load (LBS)		Overall Diameter	Section Width	Tread Width	Tread Depth	Revs/ Mile	SLR (Inch)	Speed Limit	Weight (lbs)
					S	D	S	D								
3003179	11R22.5	14	T/L	8.25	105	105	6,175	5,840	42.2	11.3	9.1	30	493	19.7	75	140
3003180	11R22.5	16	T/L	8.25	120	120	6,610	6,005	42.2	11.3	9.1	30	493	19.7	75	140
3003181	11R24.5	14	T/L	8.25	105	105	6,610	6,005	44.2	11.3	9.1	30	476	20.6	75	146
3003182	11R24.5	16	T/L	8.25	120	120	7,160	6,610	44.2	11.3	9.1	30	476	20.6	75	146
3003183	285/75R24.5	14	T/L	8.25	110	110	6,175	5,675	42.2	11.1	9.3	30	493	19.8	75	138
3002432	295/75R22.5	14	T/L	9.00	110	110	6,175	5,675	40.8	11.4	9.3	30	509	19.1	75	130

Technical data subject to change without prior notice.

Recommended Vehicle Types and Position



Recommended position



Optimized for Long-Haul Drive Position



Experience Smartec
 Newly launched 'Smartec' is an integrated package of Hankook truck and bus tire technology. Smartec is based on five main tire performance factors featuring safety, mileage, anti chip & cut, retreadability, and traction. The technology provides a range of benefits that consumers identify as a key factor when selecting tires. Smartec is applied to the entire research, development and manufacturing process for all products.

Significant Design Features

Zigzag Groove



Main 4 zigzag groove provides good traction performance.

Closed Shoulder



Closed shoulder delivers smooth wear, fuel efficiency and reinforced stability.

Advanced Rubber Technology

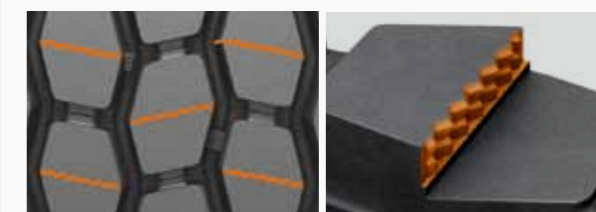


Advanced rubber technology improves fuel efficiency and mileage.



Technology and Benefits

3-Dimension Kerf



3D Kerf reinforces inter-locking between blocks and it delivers great traction performance, stability and even wear.

Heel&Toe Stopper

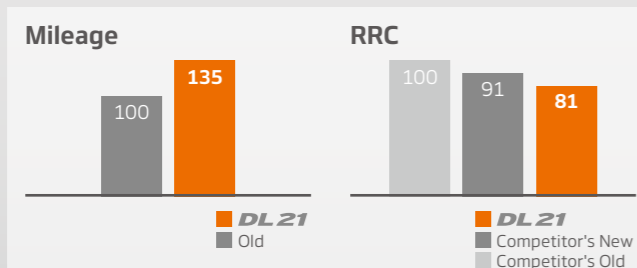


Heel&Toe Stopper in lateral groove results in self-regenerating kerf which keeps excellent traction performance until the end of wear.

A Initial Stage of Use
 Heel&Toe Stopper in lateral groove strengthens rigidity of tread block to reinforce traction and stability while suppressing irregular wear.

B Mid/Latter Stage of Use
 Hidden groove in lateral groove strengthens traction performance.

Test Results



Mileage improved 35% compared to DL07

Rolling Resistance improved 10% compared to DL07